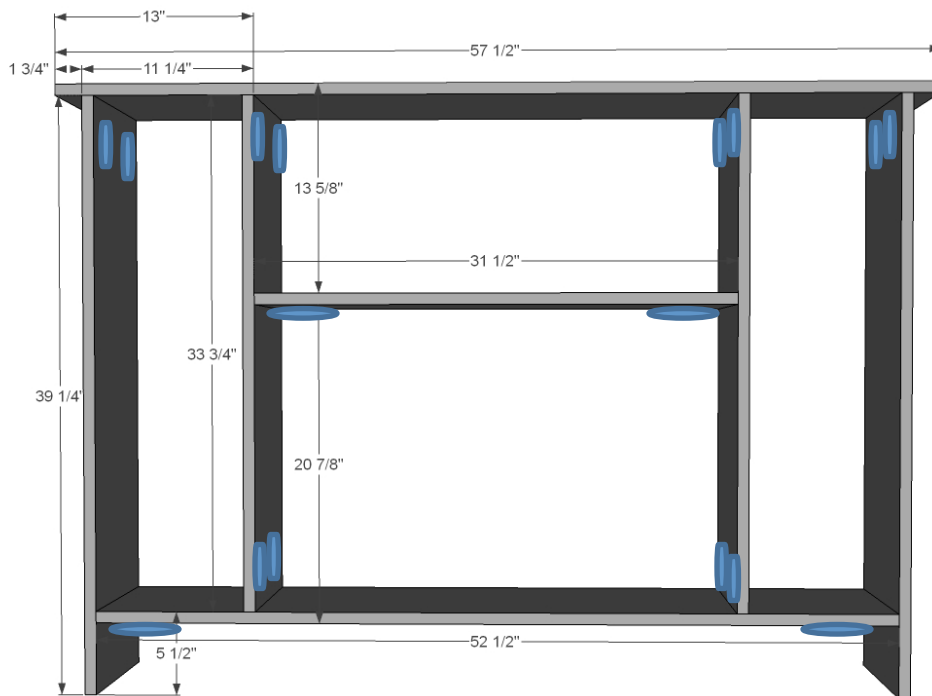
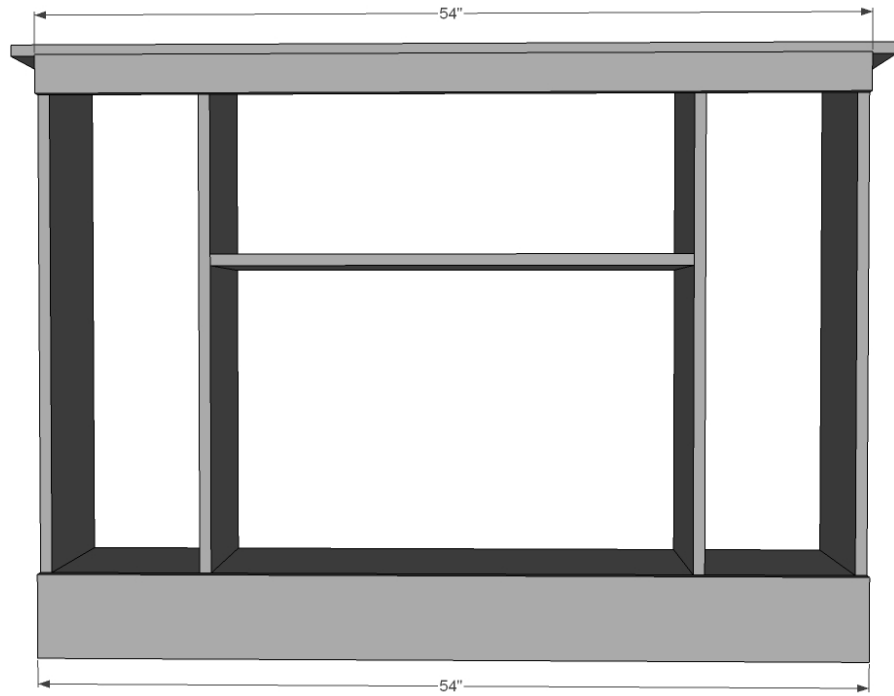


| Shopping List | Cut List |
|--|---|
| 3 – 1x12 @ 8 feet long | 1 – 1x12 @ 57-1/2" (Top) |
| 1 – 1x12 @ 10 feet long | 2 – 1x12 @ 39-1/4" (Sides) |
| 1 – 1x3 @ 10 feet long | 1 – 1x12 @ 52-1/2" (Bottom) |
| 1 – 1x6 @ 5 feet long | 2- 1x12 @ 33-3/4" (Dividers) |
| 1 – 1x2 @ 8 feet long | 1 – 1x12 @ 31-1/2" (Center Divider) |
| 8 feet of medium sized crown moulding (less than 1-3/4" finished width and 2-1/2" finished height) | 1 – 1x3 @ 57-1/2" (Top Header) |
| 8 feet of 5-1/4" base moulding | 1 – 1x3 @ 54" (Bottom Header) |
| 1-1/4" pocket hole screws | 1 – 1x6 @ 54" (Footer) |
| 1-1/4" and 1" brad nails | 2 – 1x12 @ 31" (Side Doors) |
| Wood glue | 1 – 1x12 @ 31-1/4" (Middle Door) |
| Optional back – 4x8 sheet of 3/4" plywood or paneling | 2 – 1x2 @ 11-1/4" (Side Door Trim) |
| 3 sets of Euro Style concealed hinges, non-mortise | 1 – 1x2 @ 31-1/4" (Middle Door Trim) |
| | Crown Moulding and Base Moulding cut to fit |
| | Optional back is 54" x 40" |



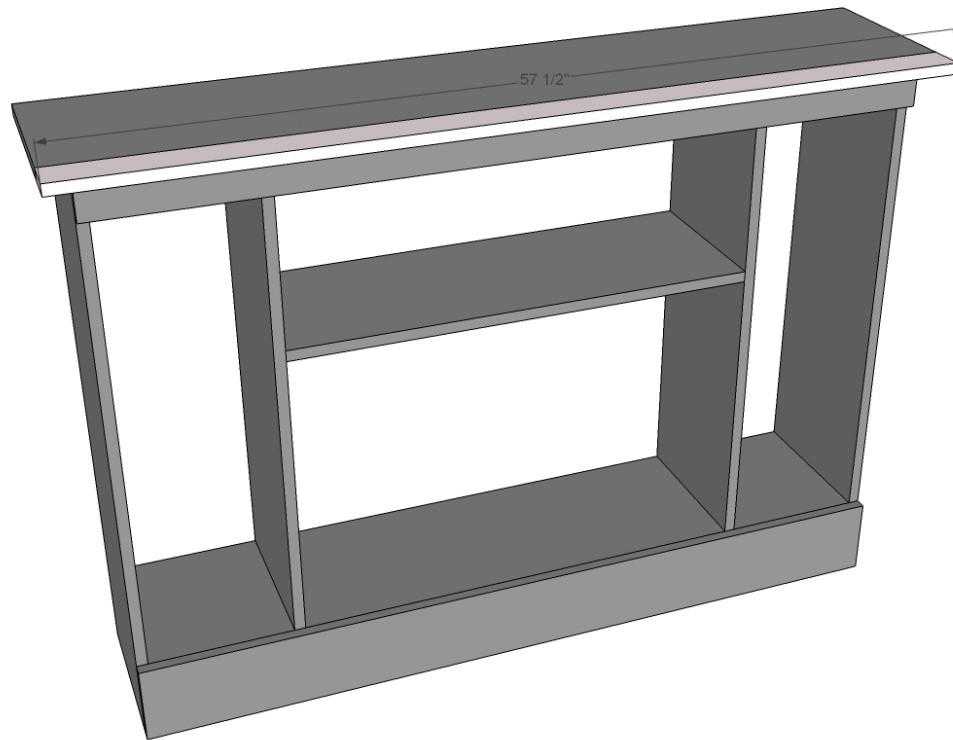
Step 1: Build carcass with 3/4" pocket holes and 1-1/4" pocket hole screws and glue.

TIP: Also drill 3/4" pocket holes along front edge of top for attaching front header piece (Step 3).

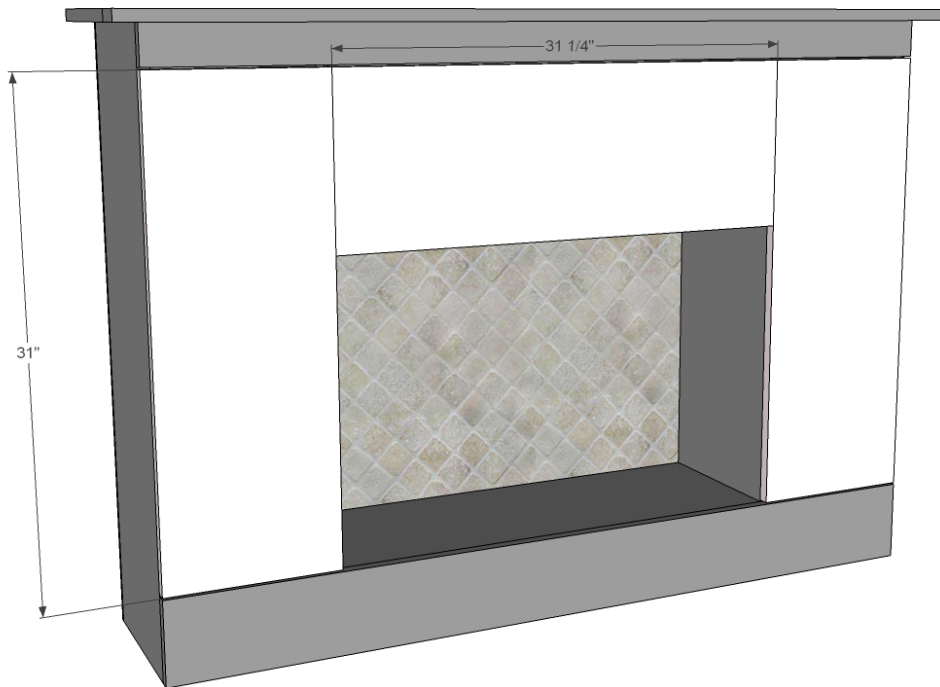


Step 2: Attach header and footer to front.

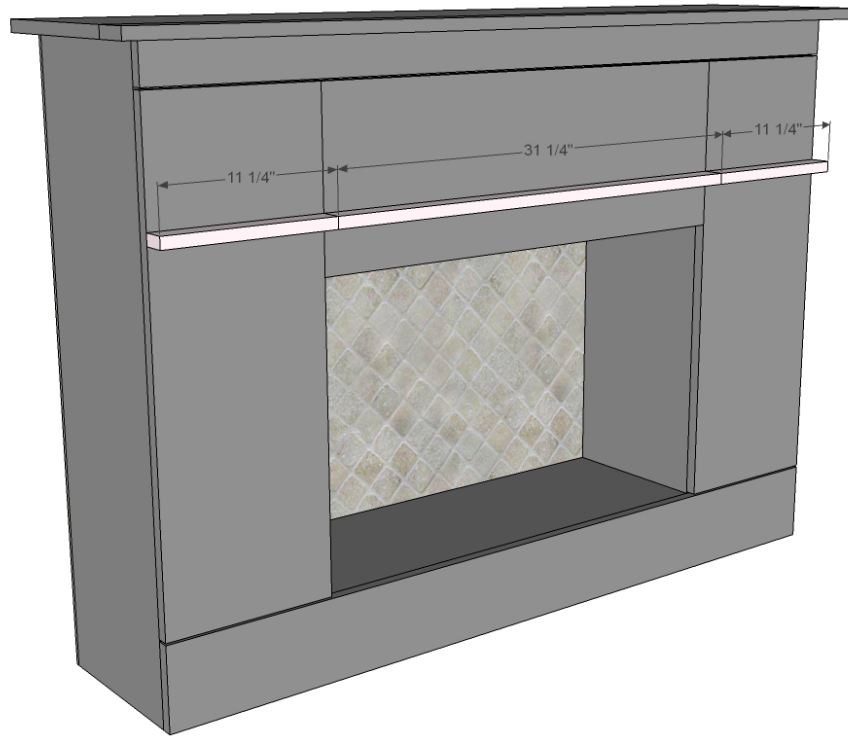
NOTE: You may choose to attach the top header piece from step 3 first to the bottom header piece, and attach the two together.



Step 3: Attach front top header piece to top, using $\frac{3}{4}$ " pocket holes and 1-1/4" pocket hole screws and glue. Also glue and nail to bottom header piece with 1-1/4" brad nails.



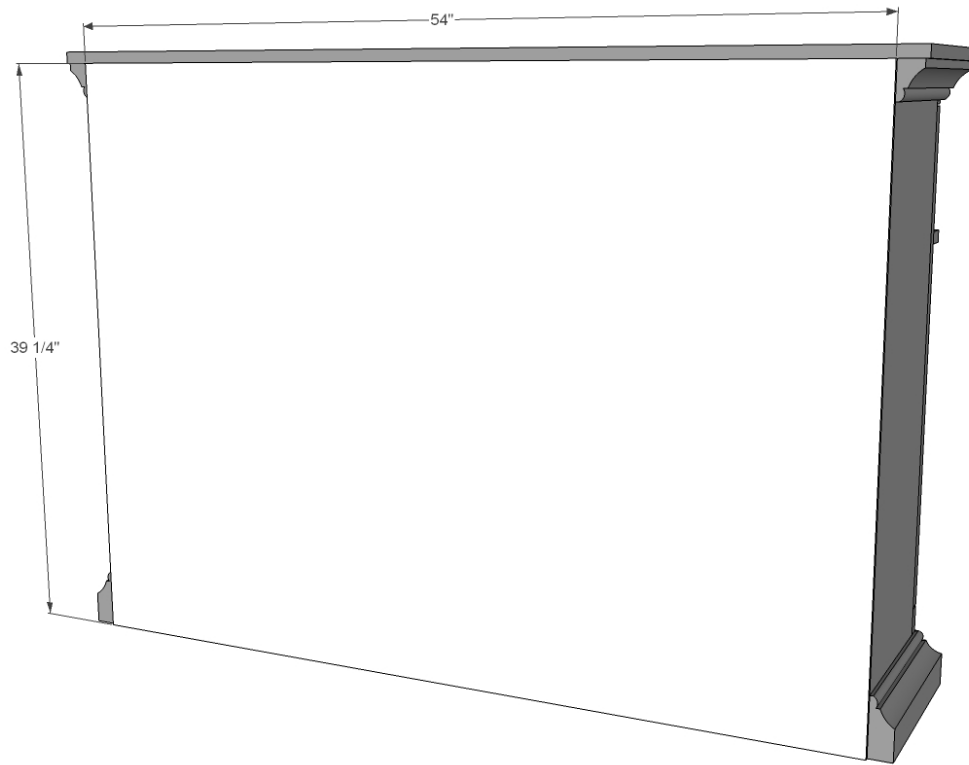
Step 4: Cut doors to fit and hinge on with hinges.



Step 5: Attach 1x2 door trim from back side.



Step 6: Cut moulding to fit and attach with 1" brad nails and glue.



Step 7: Back is attached with $\frac{3}{4}$ " brad nails and glue to all carcass boards.